

2500 E



www.ommelift.com

Trailer lift - Telescopic

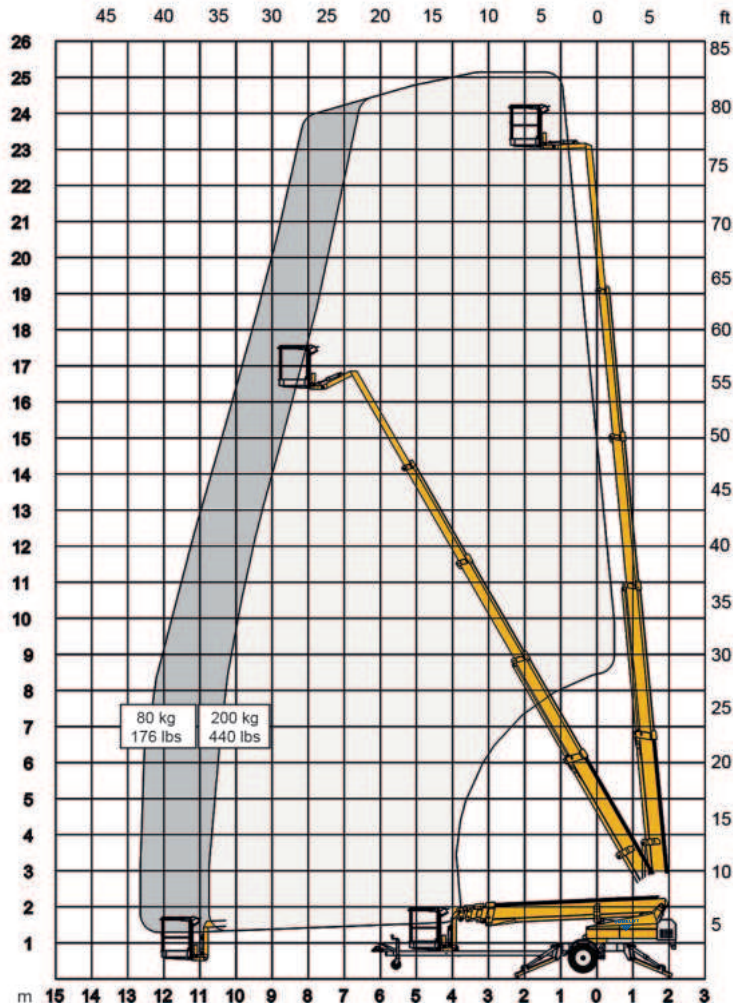
Dealer:

OMMELIFT



Built to last - ask our users!

2500 E Trailer lift



Technical Data:	2500 EB	2500 EBD
Max. working height, ft	82'3"	
Max. platform height, ft	75'7"	
Max. outreach, ft	41'3"	
Up and over clearance, ft	-	
Angle boom length (boom + basket), ft	6'6"	
Jib length (jib + basket), ft	-	
Vertical jib rotation	-	
Turret rotation	± 355°	
Basket rotation	± 41°	
Max. basket load, lbs	440 lbs	
Basket size, ft	4'1" x 2'6" x 3'8"	
Stabilizer pad size, ft	ø8"	
	⁵ Gasoline ⁶ Diesel	BATTERY HYBRID
Engine	⁵ Optional ⁶	⁶ 14kW/18.8hp
Fuel tank capacity	4 gal.	
Generator	24 V / 22 A	
Battery pack	24V/200Ah/5h	24V/200Ah/5h
Charger	24 V / 25 A	24 V / 25 A
Double charger system (230V only)	NA	NA
Elec. descent	Optional	Optional
See www.ommelift.com for more features and options		
Self-propulsion with hydraulic engagement of traction rollers	Standard	
Gradeability	14% / 8°	
Ground to tire clearance at max. set-up, ft (slope)	Min. 7" (5.9% / 3.4°)	
Engine only version available		
Total weight, lbs	6747 lbs	7011 lbs
Ground pressure, outrigger pad	285 psi	285 psi
Ground pressure with 16" x 16" spreader plate	16 psi	16 psi
Max. force, outrigger	17.1 kN	17.1 kN
Hydraulic stabilizers	Standard	
Controls	Proportional	
Flush basket mount	Standard	
Elec. power outlet in basket	Standard	
Tool trays in basket	Standard	

