

2900 E



www.ommelift.com

Trailer lift - Telescopic

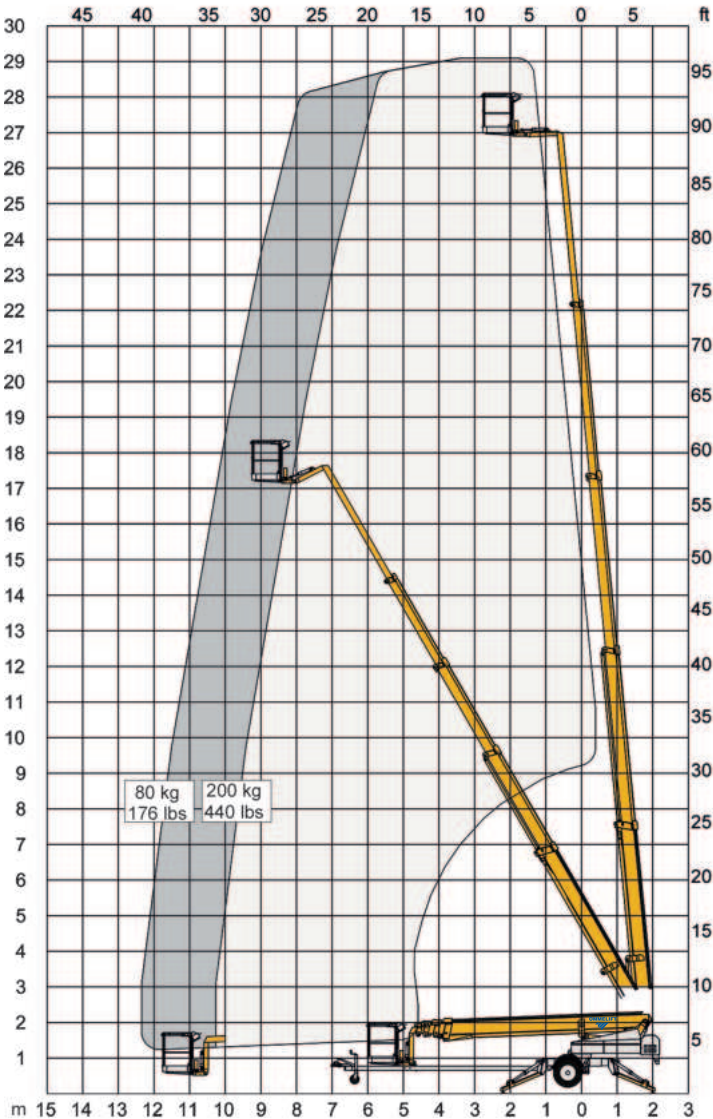
Dealer:

OMMELIFT



Built to last - ask our users!

2900 E Trailer lift



Technical Data:	2900 EB	2900 EBD
Max. working height, ft	95'1"	
Max. platform height, ft	88'5"	
Max. outreach, ft	40'4"	
Up and over clearance, ft	-	
Angle boom length (boom + basket), ft	6'6"	
Jib length (jib + basket), ft	-	
Vertical jib rotation	-	
Turret rotation	± 355°	
Basket rotation	± 41°	
Max. basket load, lbs	440 lbs	
Basket size, ft	4'1" x 2'6" x 3'8"	
Stabilizer pad size, ft	ø8"	
	^a Gasoline ^a Diesel	BATTERY HYBRID
Engine	^a Optional ^a	^a 14kW/18.8hp
Fuel tank capacity		4 gal.
Generator		24 V / 22 A
Battery pack	24V/200Ah/5h	24V/200Ah/5h
Charger	24 V / 25 A	24 V / 25 A
Double charger system (230V only)	NA	NA
Elec. descent	Optional	Optional
See www.ommelift.com for more features and options		
Self-propulsion with hydraulic engagement of traction rollers	Standard	
Gradeability	14% / 8°	
Ground to tire clearance at max. set-up, ft (slope)	Min. 7" (5.9% / 3.4°)	
Engine only version available		
Total weight, lbs	7496 lbs	7717 lbs
Ground pressure, outrigger pad	320 psi	320 psi
Ground pressure with 16" x 16" spreader plate	17 psi	17 psi
Max. force, outrigger	19.1 kN	19.1 kN
Hydraulic stabilizers	Standard	
Controls	Proportional	
Flush basket mount	Standard	
Elec. power outlet in basket	Standard	
Tool trays in basket	Standard	

